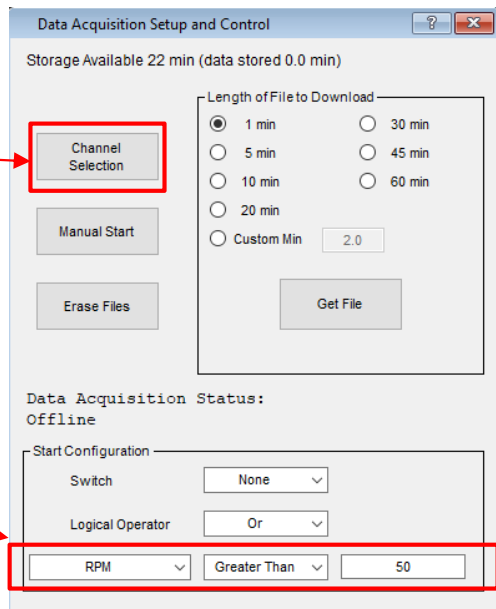
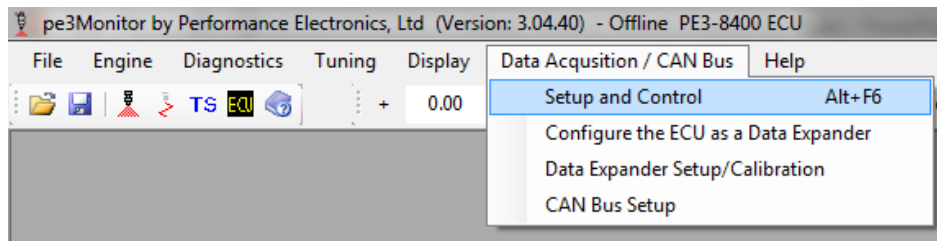


Summary: This document serves as a guideline for downloading and viewing stored PE3 engine data. Applicable versions include PE3-8400 software v3.04.10 and newer as well as PE3-SP software v3.06.00 and newer.

Instructions not valid for PE3-IG Software v3.05.XX

Introduction: Your PE3 has the ability to data log critical engine parameters when configured properly. You may record up to 31 channels of data with a sample frequency of 100hz. When downloaded to your PC, engine data is formatted into a .csv file which can be viewed using the PE data viewing software, available on the website at <http://pe-ltd.com/downloads.html>

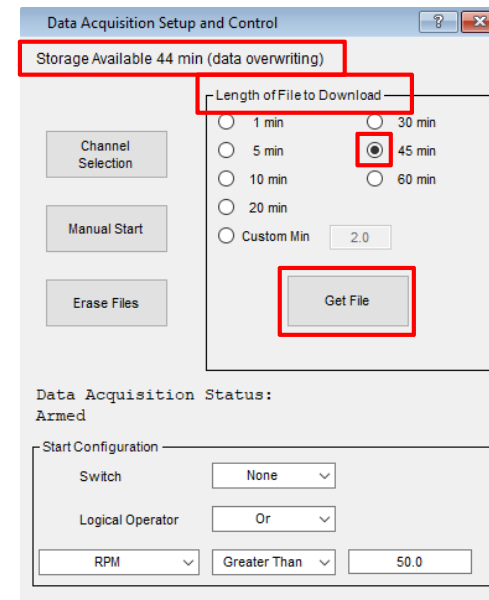
STEP 1: Enable Data logging (you must be connected to ECU)



*Select your data channels to record

*Set your start configuration to agree with the following

STEP 2: Downloading stored data



- In the above example, the data is full and overwriting the oldest data. To download data, always select your 'Length of File to Download' to a value greater than the amount of data stored. You may also use the 'Custom Min' option to download specific amounts of recent data.
- When 'Get File' is selected, you will be prompted to name the data file and choose where you want the data to be stored.
- When the download is complete, you will see 'File Transfer Success'
- PE suggest that you 'Erase Files' at the completion of a successful file transfer.

STEP 3: Launch PE Viewer and Select the specific run file to view

	wing outlaw heat_12-29-2016_001.csv	6,678 KB
	wing outlaw heat_12-29-2016_002.csv	85 KB
	wing outlaw heat_12-29-2016_003.csv	5,001 KB
	wing outlaw heat_12-29-2016_004.csv	14,058 KB

* Notice that data file 004 has largest file size, this indicates that the most recent run file holds the most data. Use this information to determine which run file to choose for your specific needs.

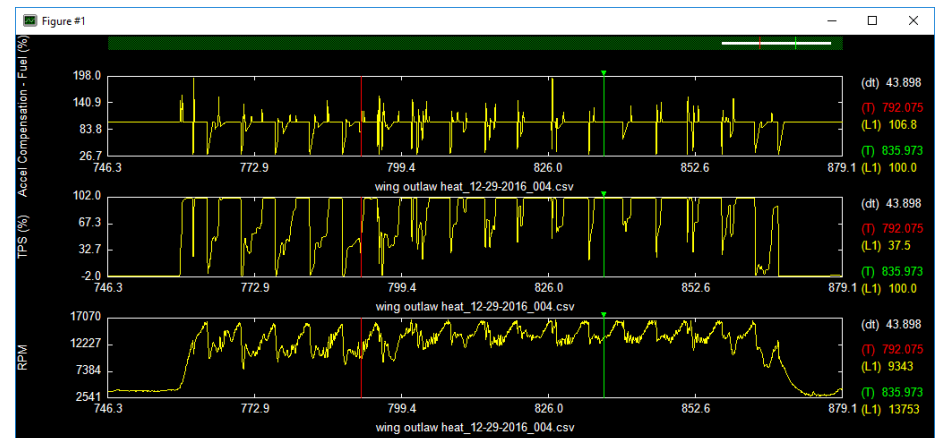
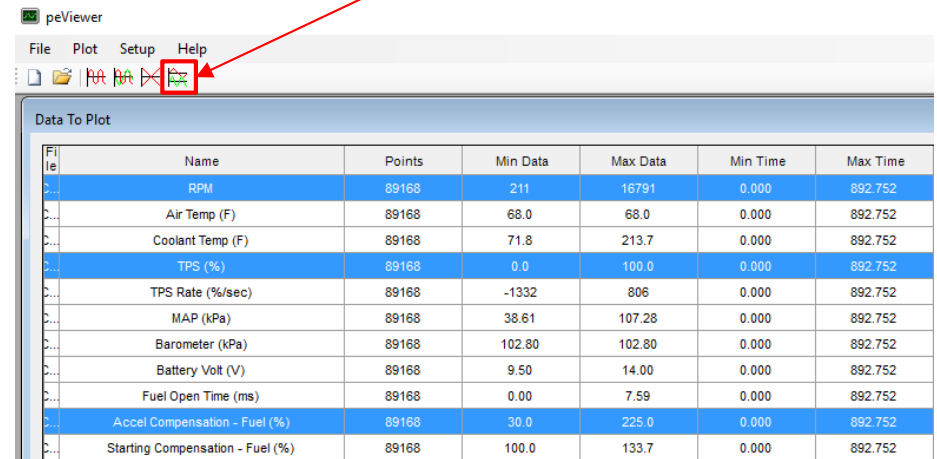
STEP 4: Selecting multiple channels to view

File	Name	Points	Min Data	Max Data	Min Time	Max Time
...	RPM	89168	211	16791	0.000	892.752
...	Air Temp (F)	89168	68.0	68.0	0.000	892.752
...	Coolant Temp (F)	89168	71.8	213.7	0.000	892.752
...	TPS (%)	89168	0.0	100.0	0.000	892.752
...	TPS Rate (%/sec)	89168	-1332	806	0.000	892.752
...	MAP (kPa)	89168	38.61	107.28	0.000	892.752
...	Barometer (kPa)	89168	102.80	102.80	0.000	892.752
...	Battery Volt (V)	89168	9.50	14.00	0.000	892.752
...	Fuel Open Time (ms)	89168	0.00	7.59	0.000	892.752
...	Accel Compensation - Fuel (%)	89168	30.0	225.0	0.000	892.752
...	Starting Compensation - Fuel (%)	89168	100.0	133.7	0.000	892.752

* Use your Left Mouse button to click on a specific channel to view. Hold down the control key 'CTRL' to select more than one channel to view on the same time graph.

STEP 5: Viewing the data

*With Multiple channels selected, choose 'Multi Plot'



*Using the RED and GREEN vertical cursors, left click and drag each cursor to determine data points and the values for each channel selected. You can also right click within the graph to ZOOM in between the cursors for increased resolution.